



Dallas Love Field Noise Dynamics



Contents

Noise Corner.....	2
Flight Operations Report.....	4
Noise Complaints.....	6
Flight Track Density Map.....	7
65 DNL Contour Map.....	9
Scheduled Runway Closures...	10
Airport Diagram.....	11

Noise Corner

Introduction

Thank you for subscribing to Dallas Love Field's (DAL) Monthly Noise Dynamics. This newsletter is published for those interested in the topic of aircraft noise here at Dallas Love Field by providing useful information, monthly data, upcoming events and news.

Residents interested in receiving our monthly noise dynamics can send an email request to AVINoise@dallas.gov

Upcoming Events



Noise Corner

Outreach and Educational Activities

If you would like the Airport Noise Monitoring Specialist to attend neighborhood meetings, schools, or any other outreach activities to serve as a resource on aircraft noise related concerns, please email AVINoise@dallas.gov to let us know.

Helpful Links (Click on Icon to access link)



[NoiseLab](#)

View information regarding aviation noise and/or the Voluntary Noise Program. NoiseLab allows you to obtain reports, view runway closures and access archived documents such as: LFEAC (Love Field Environmental Advisory Committee) presentations, annual DNL contour reports and newsletters.



[Flight Tracker - DAL](#)

Understand aircraft flight pattern, self-investigate aircraft events and submit noise concerns.



[Flight Tracker - DEA](#)

Access Dallas Executive Airport's Flight Tracker.



[YouTube - Flight Tracker](#)

A demonstration of Flight Tracker

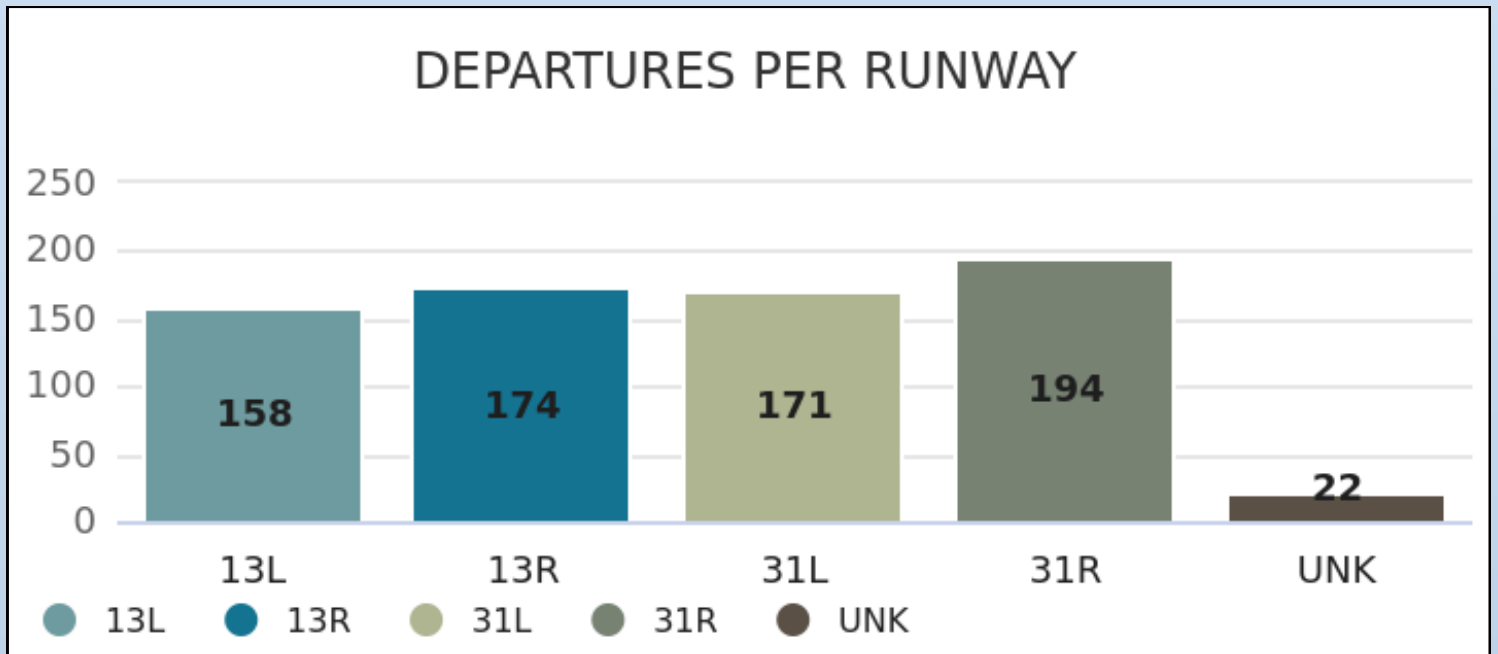
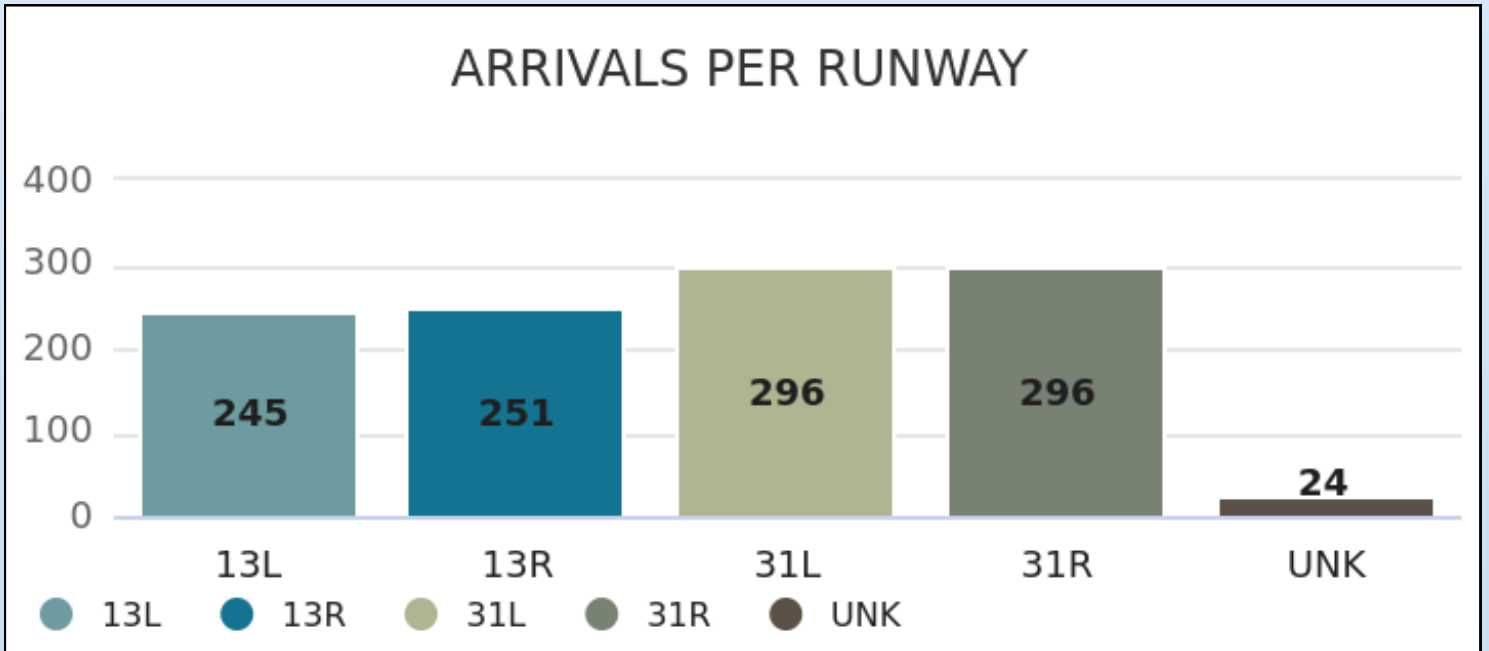


[YouTube - DAL Air Traffic Operations by FAA](#)

An overview of the National Airspace System around the DFW Metroplex.

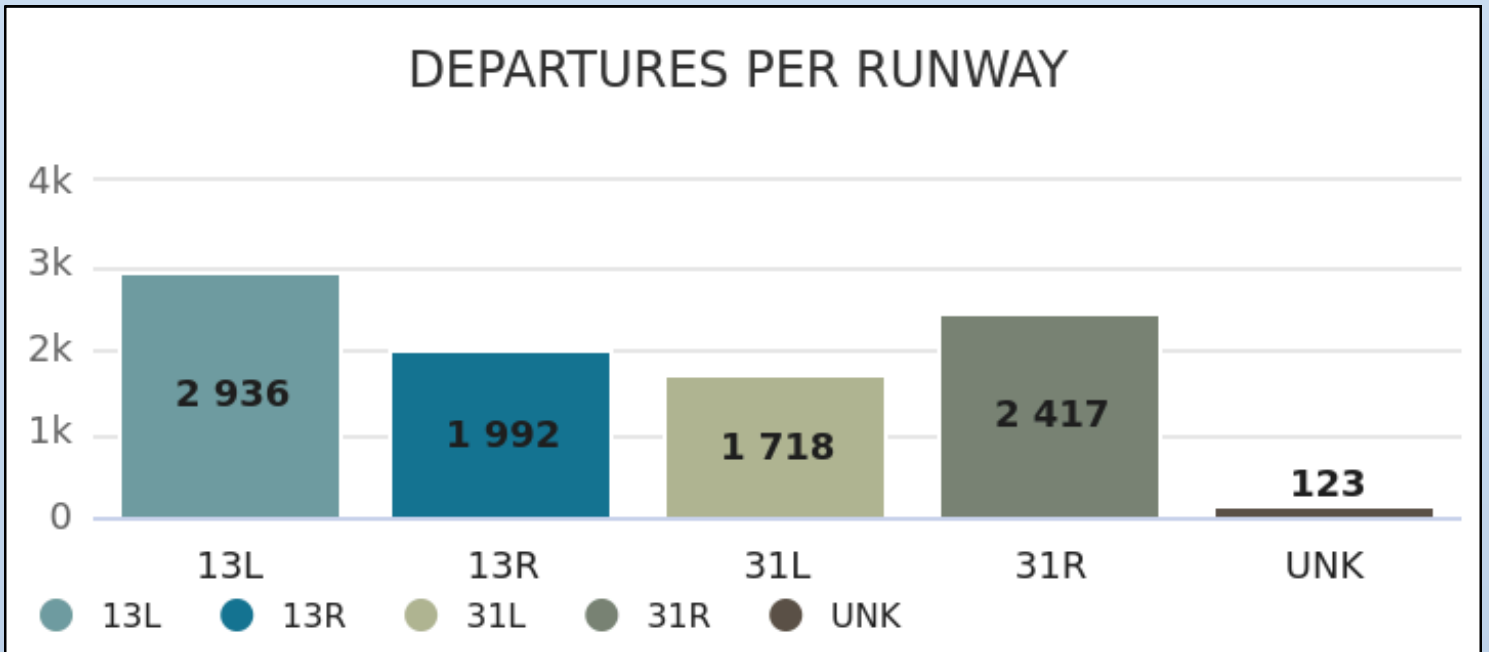
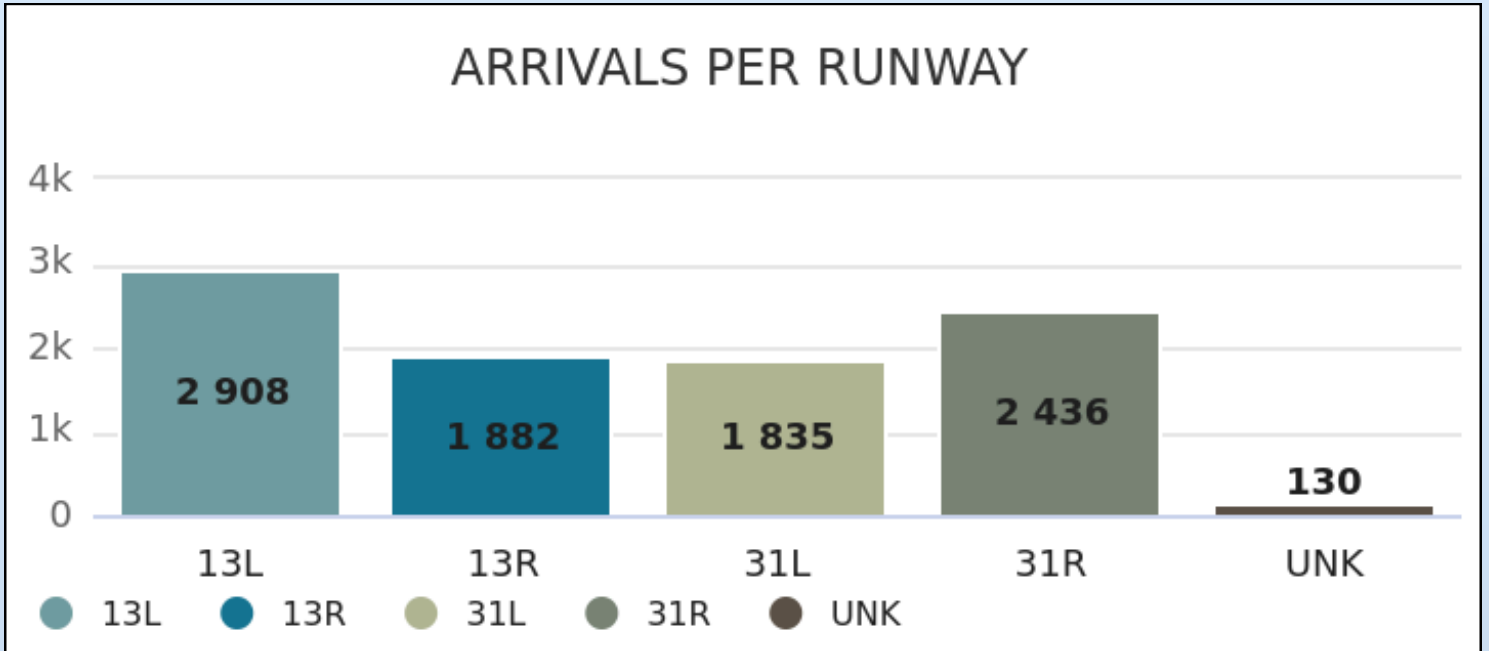
February

Arrivals and Departures From 9 p.m. - 6 a.m.



February

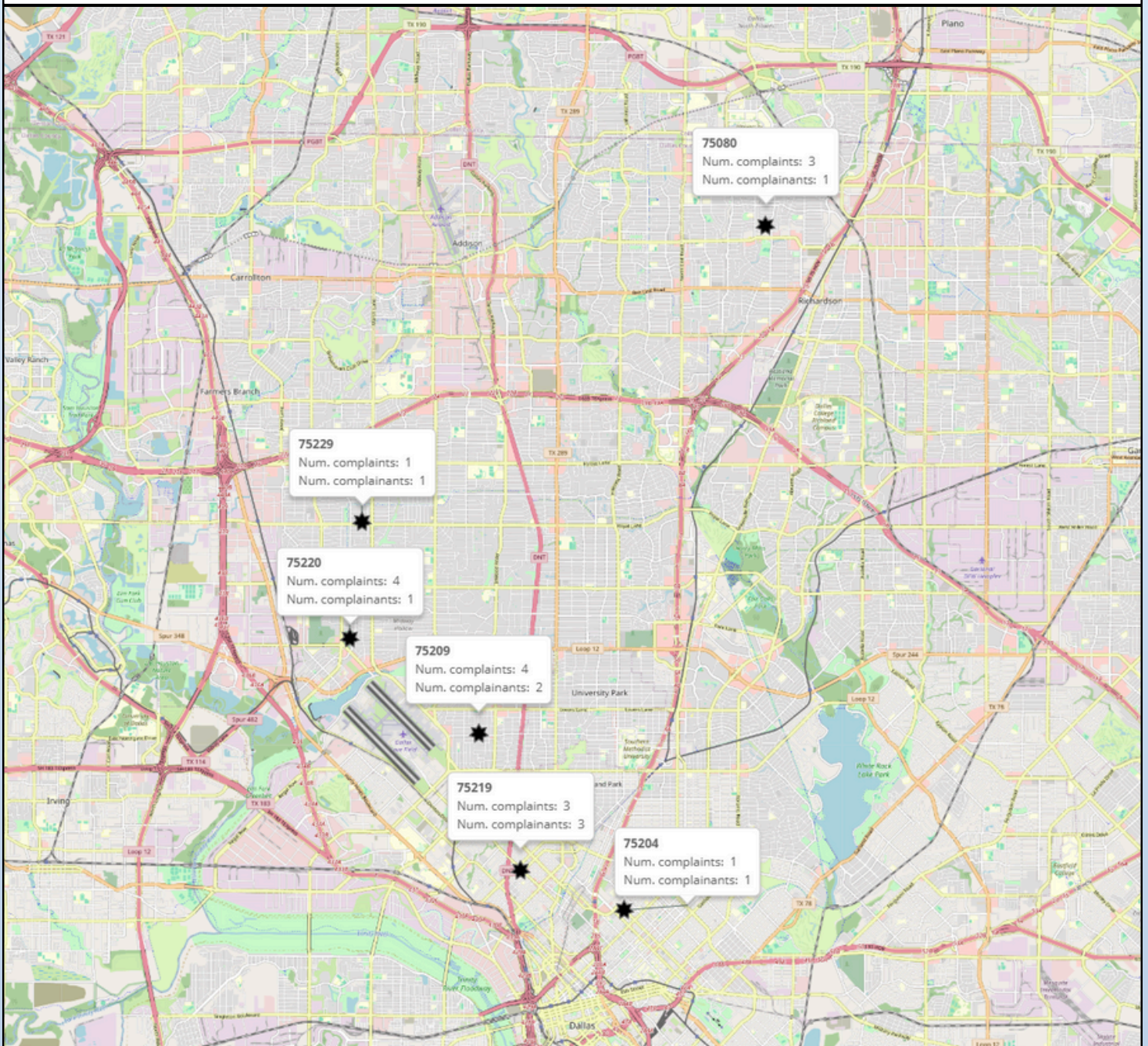
Arrivals and Departures



February

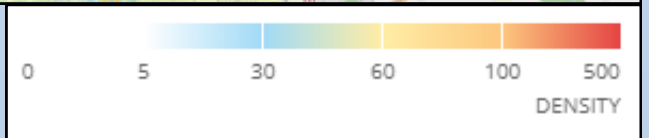
Number of Complaints by Zip Code

The map below displays the number of complaints and complainants for zip codes in the immediate Dallas Love Field area.



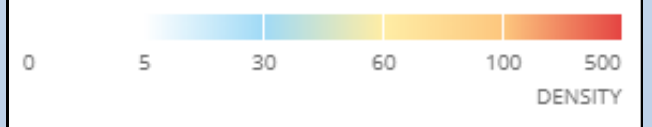
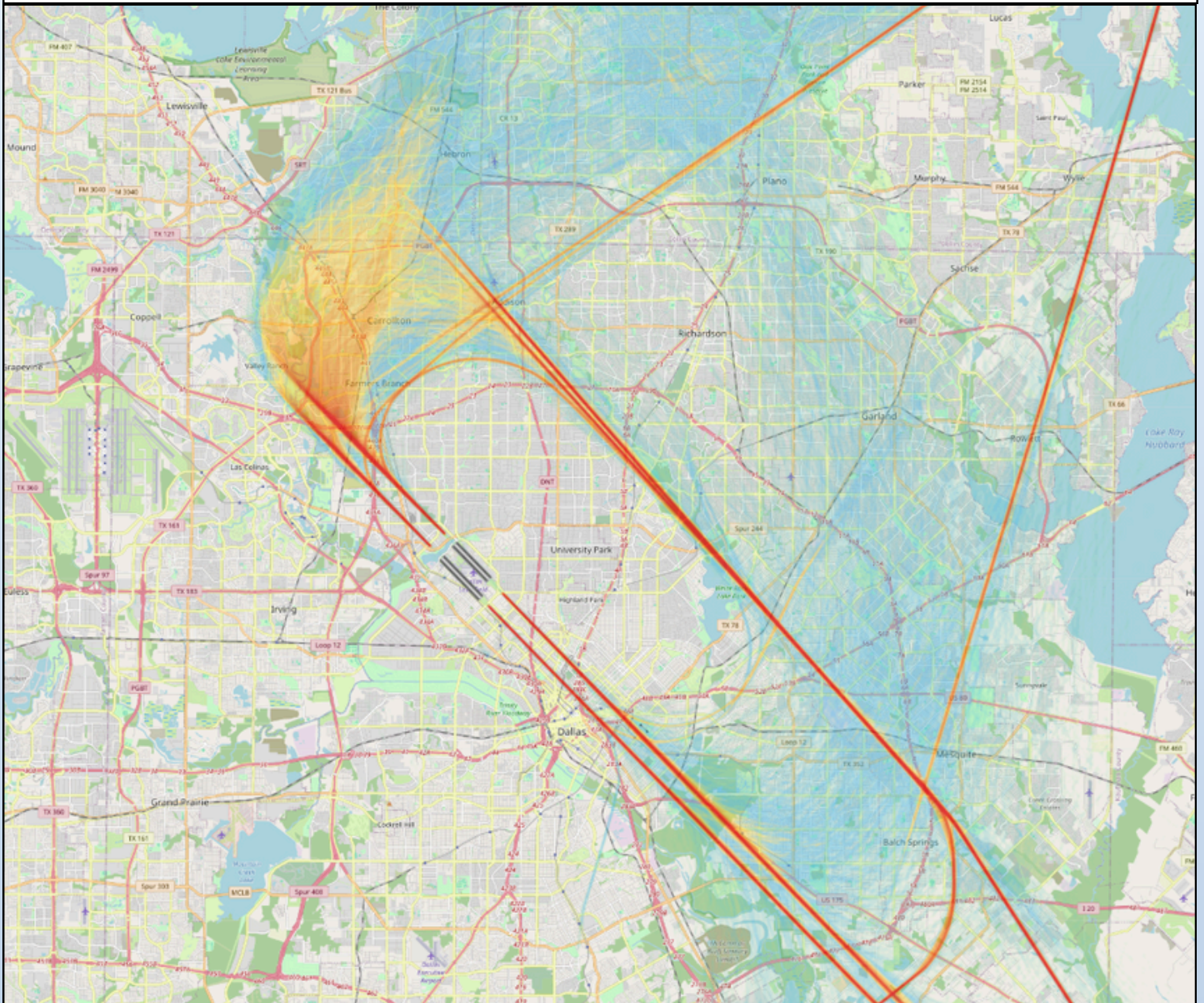
Flight Track Density Map February Departures

The following map takes all departure flight track data for the month and creates the radar density map. Dark red in the middle of the picture shows the highest density of flight tracks over the runways. The colors gradually move out to blue as the least dense.



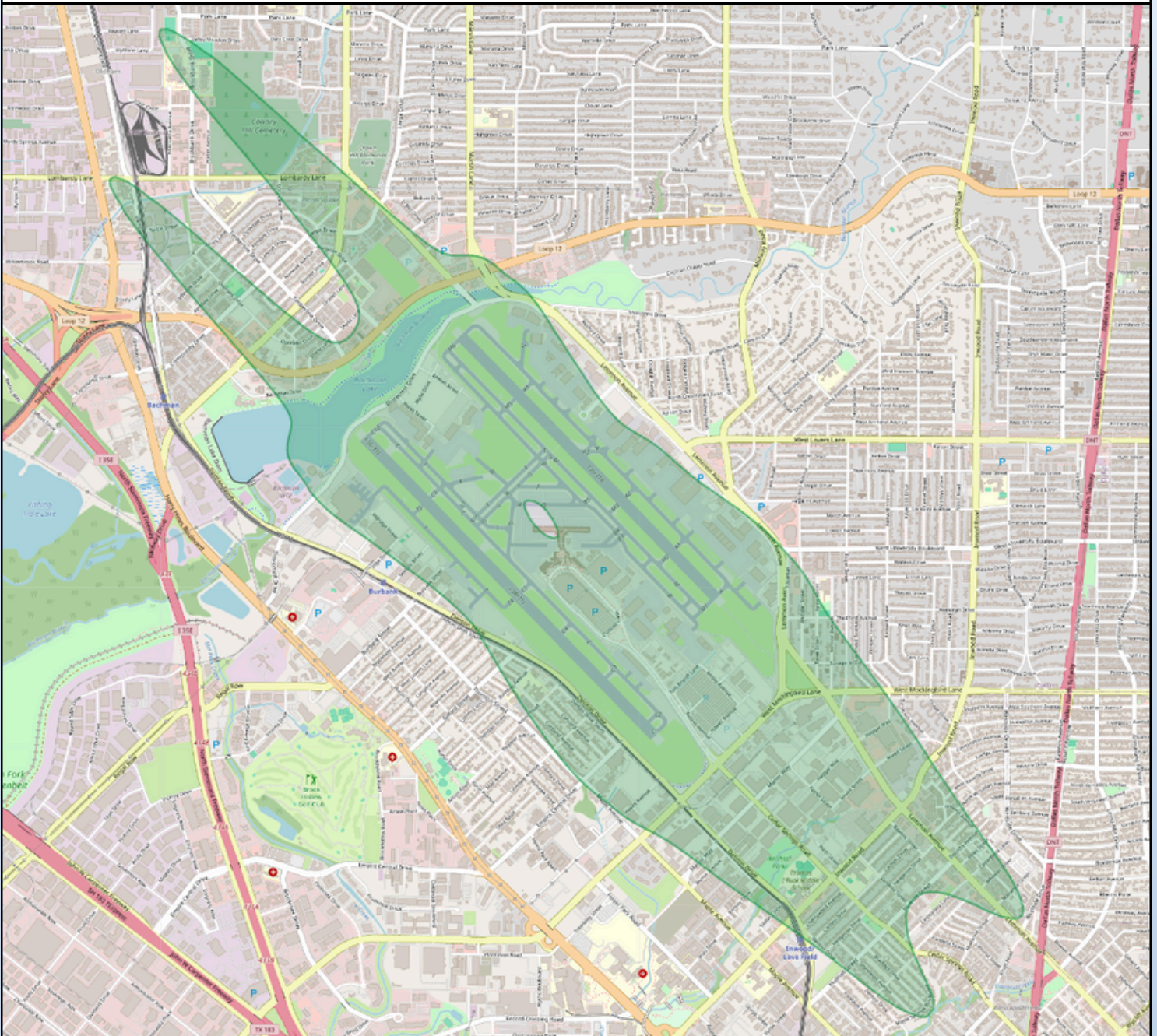
Flight Track Density Map February Arrivals

The following map takes all arrival flight track data for the month and creates the radar density map. Dark red in the middle of the picture shows the highest density of flight tracks over the runways. The colors gradually move out to blue as the least dense.



2023 Day-Night Average Sound Level (DNL) Contour Map

DNL is a metric that reflects a person's cumulative exposure to sound over a 24-hour period, expressed as the noise level for the average day of the year on the basis of annual aircraft operations. Below is a map of the **2023 65 dB** contour map for DAL. The 2023 Contour Report can be found [here](#).



Scheduled Runway Closures

Runway 13L/31R (Lemmon) Closures

- **Tuesday, Mar 4th 11:00 p.m. - Wednesday, Mar 5th 6:00 a.m.:**
Runway 13L/31R closed for General Maintenance
- **Wednesday, Mar 5th 11:00 p.m. - Thursday, Mar 6th 6:00 a.m.:**
Runway 13L/31R closed for General Maintenance
- **Tuesday, Mar 11th 11:00 p.m. - Wednesday, Mar 12th 6:00 a.m.:**
Runway 13L/31R closed for General Maintenance
- **Wednesday, Mar 12th 11:00 p.m. - Thursday, Mar 13th 6:00 a.m.:**
Runway 13L/31R closed for General Maintenance
- **Tuesday, Mar 18th 11:00 p.m. - Wednesday, Mar 19th 6:00 a.m.:**
Runway 13L/31R closed for General Maintenance
- **Wednesday, Mar 19th 11:00 p.m. - Thursday, Mar 20th 6:00 a.m.:**
Runway 13L/31R closed for General Maintenance

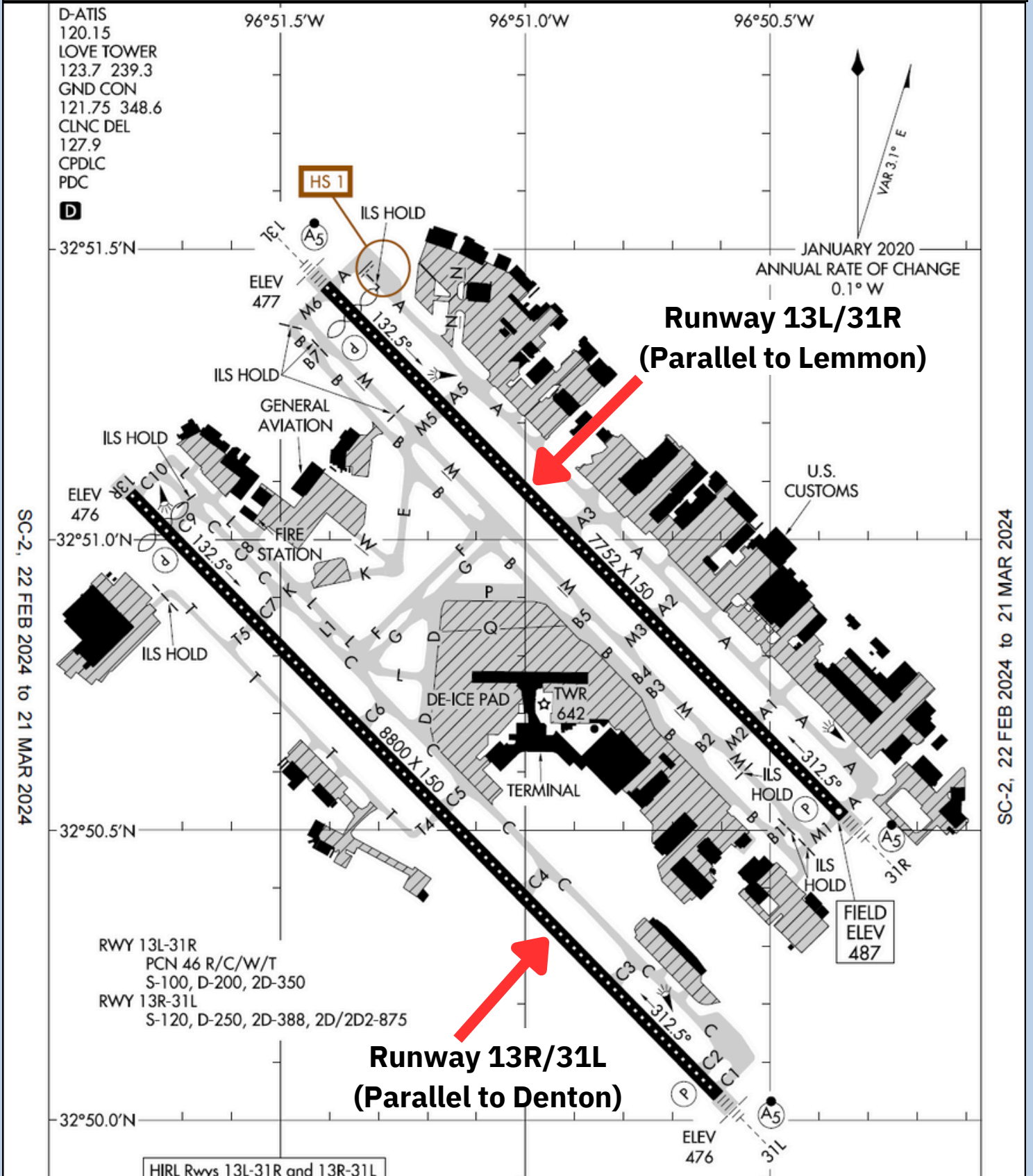
Runway 13R/31L (Denton) Closures

- **Thursday, Mar 6th 11:00 p.m. - Friday, Mar 7th 6:00 a.m.:**
Runway 13R/31L closed for General Maintenance
- **Friday, Mar 7th 11:00 p.m. - Saturday, Mar 8th 6:00 a.m.:**
Runway 13R/31L closed for General Maintenance
- **Thursday, Mar 13th 11:00 p.m. - Friday, Mar 14th 6:00 a.m.:**
Runway 13R/31L closed for General Maintenance
- **Friday, Mar 14th 11:00 p.m. - Saturday, Mar 15th 6:00 a.m.:**
Runway 13R/31L closed for General Maintenance

Stay updated on runway closures by clicking [here](#).

* Please see the airport diagram on the next page for locations of runways

Airport Diagram



In an effort to serve you better, Dallas Love Field has opened the Airport Operation Center (AOC) for your use. The AOC is staffed 24 hours per day to direct your airport related concerns. please call the AOC at 214-670-LOVE (5683).

If you have any noise-related inquiries,
Please call 214-671-8096

Translated copies of this newsletter are
available upon request.

Las copias traducidas de este boletín
están disponibles bajo petición
a solicitud.



Dallas Love Field